

OpenText™ TeleForm Release Notes

11.2

Product Released: 2016-12-01

Release Notes Revised: 2016-11-17



Caution

Cautions help you avoid irreversible problems. Read this information carefully and follow all instructions.



Important

Important notes help you avoid major problems.



Note: Notes provide additional information about a task.



Tip: Tips offer you quicker or easier ways of performing a task.

Contents

1	Introduction	4
1.1	Release Notes revision history	4
2	About TeleForm	4
2.1	New features.....	5
2.1.1	OpenText Branding.....	5
2.1.2	SharePoint Export Connect Agent.....	5
2.1.3	Enhance XML Export.....	5
2.1.4	Verifier Enhancements/Changes.....	5
2.1.5	Designer Enhancements/Changes.....	5
2.1.6	Reader Enhancements/Changes	5
2.1.7	Scan Station Enhancements/Changes.....	6
2.1.8	Other Enhancements/Changes	6
2.2	Discontinued and deprecated features.....	6
3	Packaging and documentation.....	6
3.1	Packaging and delivery information	6
3.2	Related documentation.....	7
3.3	Documentation errata	7
3.3.1	Release Notes for Prior V11 Release.....	7
3.3.2	TeleForm SharePoint Export Documentation	7
4	Supported environments and compatibility.....	12
4.1	Supported systems.....	12
4.1.1	TeleForm Server	12
4.1.2	TeleForm Workstation and RCS.....	12
4.1.3	TeleForm Web Capture Server.....	12
4.1.4	Internet Information Server (IIS): 6.0, 7.0, 7.5.....	12
4.1.5	Web Capture Client	12
4.1.6	Microsoft SQL Server	12
4.1.7	Microsoft Office.....	12
4.1.8	VMWare.....	13
4.1.9	Citrix.....	13
4.2	Supported Fax Servers.....	13
4.2.1	RightFax	13
4.3	Supported Export Formats	13
4.3.1	OpenText LiquidOffice	13

4.3.2	OpenText Content Server (previously known as LiveLink).....	13
4.3.3	HPE Records Manager.....	13
4.3.4	iManage Work.....	13
4.3.5	Other.....	13
4.4	OpenText product compatibility	14
4.5	Language support.....	14
5	Fixed issues.....	15
6	Contact information	18

1 Introduction

These Release Notes provide an overview of TeleForm 11.2, including new features, delivery information, and supported platforms. OpenText recommends that you read these Release Notes in conjunction with the documentation included with the software package. If any conflicts exist, the Release Notes supersede the other documentation.

We also recommend that you check the OpenText Knowledge Center (<https://knowledge.opentext.com/>) for any patches or documentation updates that may have been posted after the initial release of this product.

1.1 Release Notes revision history

Revision Date	Sections Revised	Description of Revisions
2016-11-08	First release.	All new content.

2 About TeleForm

This section provides an overview of TeleForm 11.2.

OpenText TeleForm is a powerful solution that enables you to automatically capture, classify, and extract information from paper and electronic documents using powerful recognition technologies to create accurate, process-ready content.

Key features include:

- **Advanced design & distribution:** Create forms with embedded logic, integrate live data, and distribute by printing, faxing, emailing, and saving as PDFs.
- **Flexible capture options:** Capture documents on demand or in a batch directly from scanners and MFPs, fax, email, web browsers, and mobile devices.
- **Powerful recognition technology:** Extract information from documents with powerful OCR, handprint, barcode, checkbox, and other recognition technologies.
- **Intelligent document recognition:** Automatically identify, classify, and extract relevant data from semi-structured and non-standard documents such as invoices.
- **Seamless validation and verification:** Create business rules to validate extracted data with other systems, visually review exceptions, and correct information.
- **Automated export & processing:** Export documents and data into other systems, and feed into OpenText LiquidOffice to automate business processes.

2.1 New features

TeleForm 11.2 includes the following new features.

2.1.1 OpenText Branding

- Now a part of the OpenText family, the product name, user interface and other branding elements have been updated to use the new OpenText TeleForm branding.

2.1.2 SharePoint Export Connect Agent

- Export forms and documents into SharePoint
- Map captured metadata to attributes in SharePoint
- More information is included in this document below (see documentation errata)

2.1.3 Enhance XML Export

- Now supports the export of images along with XML data (TF-8406)
- Provides dynamic control over export location and names of images and data files

2.1.4 Verifier Enhancements/Changes

- Allow larger thumbnails in QC (TF-8278)
- Verifier Correction options now default to Form Mode only for new users (TF-4251).

2.1.5 Designer Enhancements/Changes

- New SmartText option to auto-number rows in tables (TF-3660)
- Now only a single confirmation is required when deleting multiple form templates (TF-6720)
- SmartText field types “Page X” and “Page X of Y” now allow modification of “Page” and “of” labels to support different languages (TF-5439).
- The “File Export” tab in the Auto Export Setup dialog has been enhanced to support the dynamic creation of subfolders and specification of file names based on form fields (TF-8425).

2.1.6 Reader Enhancements/Changes

- Time between batch commits has been reduced when multiple batches are waiting to be committed. Previously there had been at least a 2-second delay between batch commits (TF-8420).
- New menu items to enable/disable individual Reader tasks such as Evaluation, Identification, Batch Commit, Batch Distribution, Batch Page Link, Missing Page Batch Commit, Non-Batch Export and Non-Batch Distribution (TF-6458).
- Added more information (original image path, batch and page number if applicable) to warning messages related to problems with classifying images to help identify the image that triggered the warning (TF-8508).
- Improve speed when performing various Reader tasks on slower systems by optimizing code and reducing time between some events (TF-8563).

- Allow multiple Readers to monitor same WCO Server directory without creating duplicate batches (TF-8419)

2.1.7 Scan Station Enhancements/Changes

- Stop showing scan/directory settings and controls when opening a batch that has already been accepted (TF-8490).
- Improve scanning speed when using high speed scanners by using FILE XFER method for TWAIN scanners (TF-8409).

2.1.8 Other Enhancements/Changes

- The global “Enable Scripts” option has been removed. Scripting methods can now be disabled individually in the Scripting API add-ins dialog (TF-8387).
- The “Fail commit if this export fails” option is now enabled by default when adding a new export format to a form (TF-8357).
- More details added to export failure messages (TF-8407)
- Batches with a status of “Batch is being created” or “Ready for transfer” can now be discarded from a workstation other than the one that created the batch (TF-4490)
- Added notification when a .tfd file is over 2GB in size and can no longer be appended (TF-8422).
- Version-independent registry settings in the Settings and Events keys are now carried over between versions when performing over-the-top upgrades (TF-8392).
- Add support for LDAP port 636 authentication method (TF-8429).
- Show Completed/Discard batches now allows you to specify timeframes up to 14400 minutes (10 days) (TF-8327).

2.2 Discontinued and deprecated features

The following features have been deprecated in this release:

- BasicScript: BasicScript is no longer recommended for use with TeleForm and remains enabled only to support legacy environments. Use of the TeleForm COM Scripting API is recommended. A reminder will also be displayed each time the BasicScript editor is opened (TF-8544).

3 Packaging and documentation

Downloads and documentation for TeleForm are available on the OpenText Knowledge Center (<https://knowledge.opentext.com/>).

3.1 Packaging and delivery information

The software and documentation for TeleForm includes the TeleForm Installer Package, a downloadable self-extracting file that includes the following:

- TeleForm Installer (launched from main setup.exe installer)
- Web Capture Option Installer (launched from main setup.exe installer)
- Remote Capture Station Installer (launched from main setup.exe installer or from the setup.exe installer found under .\RCS)
- Documentation Installer (launched from main setup.exe installer)
- Additional Connect Agent Installers (found under .\TF\Connect Agents)

3.2 Related documentation

For additional information about TeleForm, or for supplemental information about related products, refer to the following documents, which are available on the OpenText Knowledge Center (<https://knowledge.opentext.com/>).

3.3 Documentation errata

3.3.1 Release Notes for Prior V11 Release

Information about prior V11 releases (including documentation for new features in those releases) can be found in the Release Notes for those prior versions. Information in the most recent Release Notes supersedes that found in the help file, PDF documentation or earlier Release Notes.

- TeleForm 11.0 Release Notes – Can be found in the root folder of the TeleForm installer package
- TeleForm 11.1 Release Notes – Can be found in the root folder of the TeleForm installer package

3.3.2 TeleForm SharePoint Export Documentation

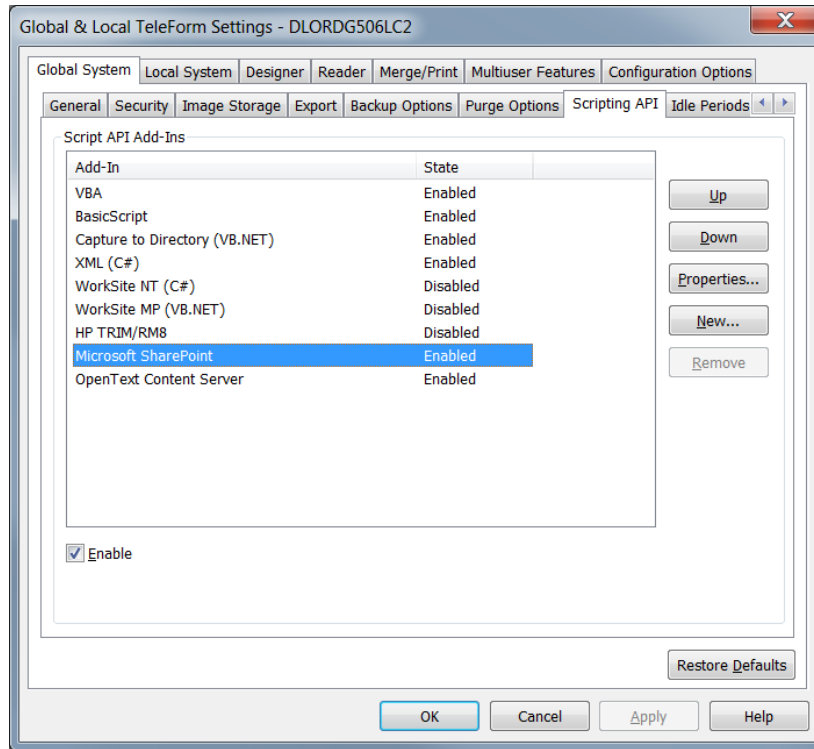
The connect agent for Microsoft SharePoint supports auto-exports to Microsoft SharePoint 2013 and 2016. Information about the new TeleForm SharePoint Export was omitted from the final guide and so has been included here for reference

1. **Prerequisite:** SharePoint Client Components

SharePoint Client Components v16 is required for the SharePoint Export to work.

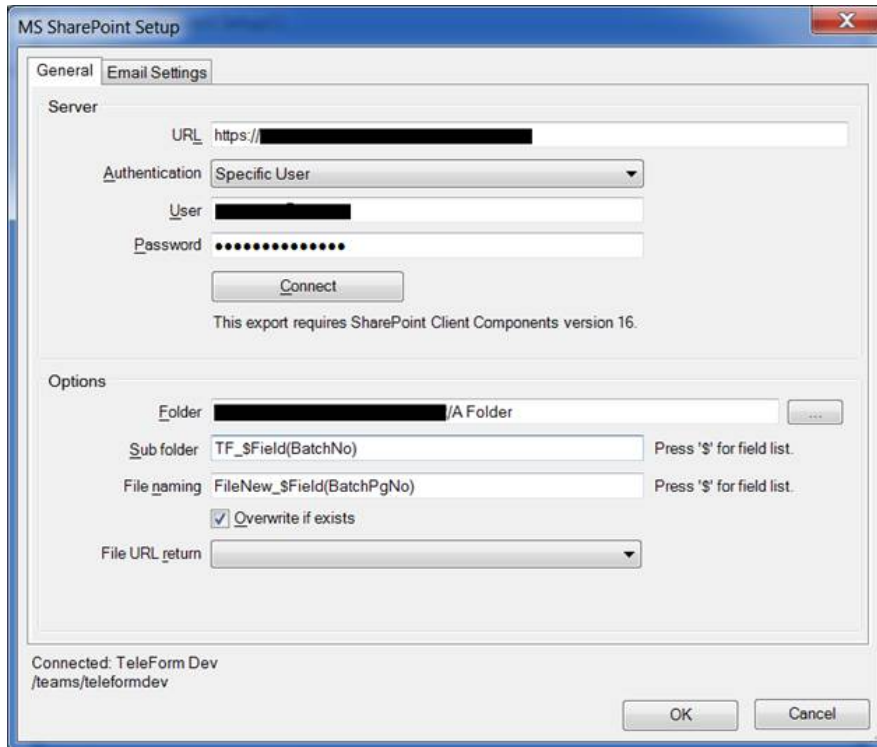
- This may or may not already be installed on your computer.
- See <https://www.microsoft.com/en-us/download/details.aspx?id=42038> for more information.

2. **Enable Export:** If necessary, enable the add-in in the Configuration->Global Settings->Scripting API dialog



3. Setup the Auto Export

With a Form or Document open in designer, set up the export using Auto Export dialog. Select MS SharePoint as the format and bring up the MS SharePoint Setup dialog by clicking the Save As... button:



The MS SharePoint export requires that an image file be configured for the export, configure it in the Auto Exports – File Export tab. The *Export Files* box must be checked. The directory location specified is used only for temporary storage while the file is being uploaded to the repository.

Metadata field mapping is done on the Auto Exports - Fields tab. Support is included for most of the standard SharePoint field types:

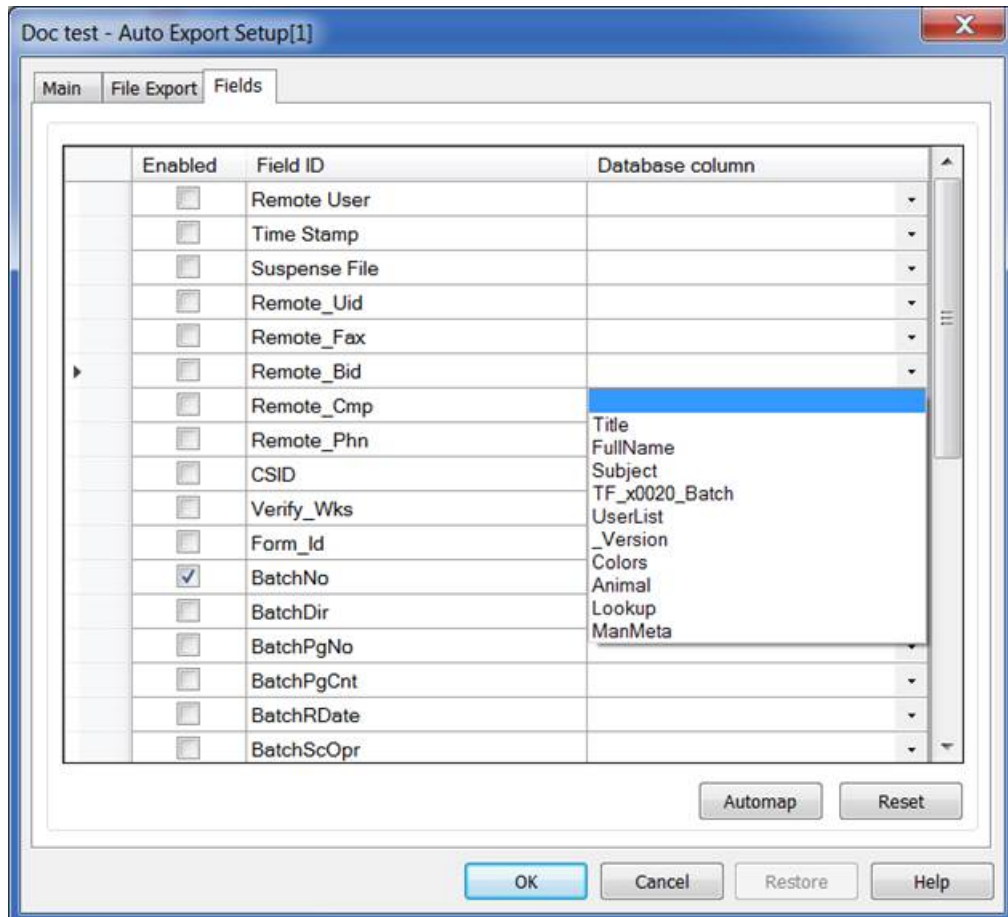
- Text
- Note
- Number
- Integer
- YesNo (boolean)
- Currency
- User and MultiUser (separated by semi-colon)
- URL
- Choice and MultiChoice (separated by semi-colon)
- Lookup fields
- Managed Metadata fields

Note that errors writing metadata fields will be reported but will not cause the export to fail.

During Setup:

- A folder can be selected from Browse or typed manually. Field macros may be used (type \$ for list). The folder location must exist for export to succeed.
- A subfolder will be created if it does not exist. Multiple levels are fine. Field macros may be used.
- Naming allows specification of file name used in export. Field macros may be used. The default value is a TeleForm unique name.
- The File Return URL allows the full URL of the exported file to be returned to a form field to be used by subsequent export.
- If Overwrite is checked, a new revision of the file will be added. Otherwise an attempt will be made to create a unique file by adding _<number> to file name.

In the Fields tab a drop list will contain SharePoint fields defined for the selected document library:



4 Supported environments and compatibility

This section provides details about supported platforms, systems, and versions.

4.1 Supported systems

4.1.1 TeleForm Server

- *Microsoft Windows Sever 2012 R2*
- *Microsoft Windows Sever 2008 R2*

4.1.2 TeleForm Workstation and RCS

- *Microsoft Windows 10*
- *Microsoft Windows 8.1*
- *Microsoft Windows 8*
- *Microsoft Windows 7 (SP1) 32-bit or 64-bit*

4.1.3 TeleForm Web Capture Server

- *Microsoft Windows Sever 2012 R2*
- *Microsoft Windows Sever 2008 R2*

4.1.4 Internet Information Server (IIS): 6.0, 7.0, 7.5

- *.NET: .NET Framework 4.0 (installed automatically if required), Web Services Enhancements for Microsoft .NET(WSE)*

4.1.5 Web Capture Client

- *Microsoft Windows 10*
- *Microsoft Windows 8.1*
- *Microsoft Windows 8*
- *Microsoft Windows 7 (SP1) 32-bit or 64-bit*
- *Microsoft Internet Explorer 9, 10 or 11*

4.1.6 Microsoft SQL Server

- *Microsoft SQL Server 2014*
- *Microsoft SQL Server 2012*
- *Microsoft SQL Server 2008 (64-bit)*
- *Microsoft SQL Express 2008 (if installed by TeleForm for single-user systems)*

4.1.7 Microsoft Office

- *Microsoft Office 2013*

4.1.8 VMWare

- VMWare Server ESX version 4 and higher
- Reader and AutoMerge Publisher only are supported for production use

4.1.9 Citrix

- XenApp 6
- XenApp 7

4.2 Supported Fax Servers

4.2.1 OpenText RightFax

- RightFax 10.x
- RightFax 9.x

4.3 Supported Export Formats

4.3.1 OpenText LiquidOffice

- LiquidOffice 7.x
- OpenText LiquidOffice was previously known as HP LiquidOffice, HP Process Automation, Autonomy Process Automation, and Cardiff LiquidOffice.

4.3.2 OpenText Content Server

- LiveLink 9.7
- OpenText Content Server was previously known as OpenText LiveLink.

4.3.3 Hewlett Packard Enterprise Content Manager

- HPE Content Manager 8.1
- HPE Content Manager 8.3
- HPE Content Manager was previously known as HPE Records Manager, HP Records Manager, and HP TRIM.

4.3.4 iManage Work

- iManage Work 8.5
- iManage Work 9.0
- iManage Work was previously known as HP WorkSite, Autonomy WorkSite, Interwoven WorkSite, and iManage WorkSite.


4.3.5 Other

- XML

- *ODBC*
- *Capture to Directory*
- *CSV/DEL*
- *Microsoft Access*
- *Microsoft Excel*
- *SPSS*

4.4 OpenText product compatibility

The section provides details about which versions of other OpenText products are compatible with this release of TeleForm 11.2.

 **Note:** For the latest compatibility information for OpenText products, refer to the Compatibility Matrix (<https://knowledge.opentext.com/go/matrix>) on the OpenText Knowledge Center.

Product Name	Version	Notes
OpenText LiquidOffice	7.x	Formerly known as HP LiquidOffice, HP Process Automation, Autonomy Process Automation (APA), and Cardiff LiquidOffice.
OpenText RightFax	9.x, 10.x	
OpenText Capture Document Reader	3.6 Build 41	Formerly known as DOKuStar
OpenText Content Server	LiveLink 9.7	Formerly known as Livelink

4.5 Language support

TeleForm is currently localized in the following languages. Future releases may add additional languages.

Component	Languages							
	EN	DE	JA	FR	PT-BR			
TeleForm UI	B	UI	UI (*1)	UI	UI			
Web Capture Option	B	UI	UI					

UI = user interface only

B = both user interface and online help

*1 = Installer for Japanese version is in English

5 Fixed issues

This section provides information about past issues that have been fixed in this release.

Issue Number	Issue Description
TF-8536	Unhandled exception in AMP at shutdown
TF-8375	Can't open VBA form script immediately after closing it
TF-8360	Automated Batch Creation is processing batches with corrupted images multiple times rather than renaming them so they don't get processed more than once.
TF-8384	Grid control doesn't display correctly with non-default font scaling
TF-8386	Checking 'Disable Script' causes batch creation to fail in various areas. Note: Individual scripting interfaces can now be disabled via the Scripting Add-Ins dialog instead of using this setting.
TF-8397	Issue with Character Mode correction option appearance in preview section
TF-8408	Progress control not working correctly when deleting multiple items from the Log Tracking dialog.
TF-8411	WCO problem with Job names that have umlauts in them

Issue Number	Issue Description
TF-8402	Issue with AMP API merges to RightFax when merging multiple forms in the same merge job.
TF-8441	Switching between LDAP/Windows security provider options no longer erases settings from previously selected option.
TF-8440	An error is shown when creating a new user (in security settings) and not copying rights from another user.
TF-8483	Japanese form from created with TF 10.5.2 incorrectly auto-selected Japanese language/character set in V11.1 system
TF-8482	Removed reference to CD case during install when entering license code.
TF-8484	GDI handle usage increases significantly during Verification in some situations
TF-8489	Batch Management scroll position not retained after a refresh
TF-8488	Barcode engine is ignoring the "raw data" setting for Codabar barcode type.
TF-8497	QC image viewer scale/zoom control is grayed
TF-8427	No records are exported to perfctest.txt after running performance tests on Japanese version of TeleForm
TF-8502	Unhandled exception when running Reader as a service and "Show Evaluation Process" is enabled.
TF-8505	GUI issue in Image Export tab of export setup dialogs (dynamic subfolder setting is blank rather than <none>).
TF-8504	"Validate Files" Does not find form templates within subfolders starting with a period.
TF-8507	Processing same image multiple times could provide different results in certain situations

Issue Number	Issue Description
TF-8087 TF8424	Out of memory errors when extracting large images from certain PDFs
TF-8487	Suppress empty group objects when exporting to FXF
TF-8519	Exception after SQL recovery when table logging is disabled
TF-8522	Display problem with Reader Message Log when dialog will appear empty until closed/restored
TF-8412	SSO not working when stored AD path has spaces after comma or around equal sign
TF-8540	Tooltips missing for some WCO toolbar buttons
TF-8547	WCO toolbar buttons not grayed out when disabled
TF-8548	Application error if capture zone field prefilled from signature zone
TF-8559	Allow administrator to change owner ID of batches created with an invalid group (owner) ID using Batch Properties dialog.

6 Contact information

OpenText Corporation
275 Frank Tompa Drive
Waterloo, Ontario
Canada, N2L 0A1

Support: <https://support.opentext.com>

Knowledge Center: <https://knowledge.opentext.com>

For more information, visit www.opentext.com